

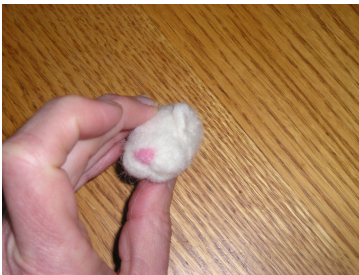
NEEDLE FELTED EASTER BUNNY



Make a large egg shape for the body and a small egg shape for the head. On the small end of the smaller egg shape, needle felt a pink nose in a triangular shape.



Add fleece to the nose area. Shape the nose and mouth area by indenting. Add fleece to the chin.



Add a roll of fleece to the eye area. Add dark brown fleece to the eye. Add fleece below the eye and build up the jaw.



Finish shaping the eye and jaw. Roll fleece around a 18 gauge 2 ½ inch piece floral wire to form the front limbs. Attach the front legs to the body.



Make legs out of 4 ½ inch pieces of floral wire. Wrap with fleece, shape, and attach both to bunny body. Attach the head to the body. Fold a strip of fleece in half for an ear.



Make an ear shape and attach to the head. Add some pink accent to the ear. Finish needling your bunny until you are happy with the finished rabbit.